



## **PCORI Infrastructure Program and Senior Officer Position Description**

The Patient-Centered Outcomes Research Institute (PCORI) is seeking outstanding candidates for the positions of Senior Program Officer and Program Officer within the Patient-Centered Outcomes Research (PCOR) Infrastructure Program. The position will involve developing funding announcements, providing thought leadership and strategic direction for the program as well as managing PCORI funded research contracts that will support accelerating the nation's data infrastructure for clinical outcomes research.

Successful candidates should have knowledge of current relevant ONC initiatives, as well as up to date knowledge of work sponsored by other agencies in this area including AHRQ, FDA, NIH, and non-governmental private funders.

Candidates are required to have a minimum of a Master's degree; preference will be given to candidates who have a PhD or a professional clinical degree in one of the following disciplines: clinical or biomedical informatics, health services research, clinical epidemiology, health economics or other relevant discipline. Expertise is not expected in all areas.

Candidates must demonstrate specific training and/or research experience with the development, implementation and use of large clinical data networks for biomedical research purposes, analysis of data and extensive knowledge of the architecture, governance, patient privacy and data standard challenges associated with building and sustaining large clinical data networks.

Interested candidates should apply at <http://www.pcori.org/employment-opportunities/?position=5857>.

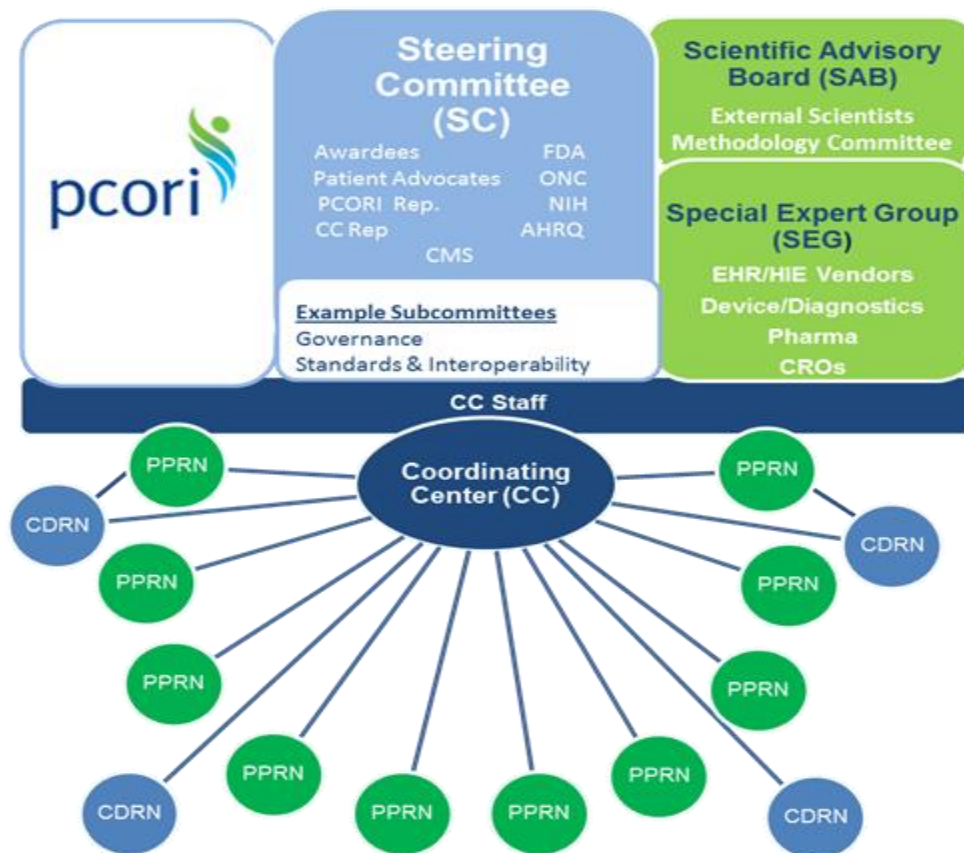
## **PCORI's Infrastructure Program: Building a National Patient-Centered Clinical Research Network**

The goal of PCORI's National Patient-Centered Clinical Research Network Program is to improve the nation's capacity to conduct comparative clinical effectiveness research (CER) efficiently, by creating a large, highly representative electronic data infrastructure for conducting clinical outcomes research. Specifically, this program will promote a more comprehensive, complete, longitudinal data infrastructure; broader participation of patients, clinicians, health systems, and payers in the research process; and improvements in analytic methods for both observational and experimental CER. The creation of a national patient-centered clinical research network could enable the US, equipped with a learning health care system, to conduct large-scale research with enhanced timeliness, accuracy and efficiency. The core components of this network will be Clinical Data Research Networks (CDRN) which are healthcare delivery system-based networks that have the potential to become an ideal electronic network, without structural impediments, and Patient Powered Research Funding Announcement:

Patient-Powered Research Networks (PPRN) which are groups of patients interested in forming a research network and in participating in research.

## PCORI's Infrastructure Program: Building a National Patient-Centered Clinical Research Network

CDRNs and PPRNs- Phase 1(**Figure A**)



**Figure A** above displays the various touch points that will be set up to help PCORI guide this effort. Program Officers in this position will work very closely with the staff of the Coordinating Center to facilitate the Active Portfolio Management and support of this funding.

To learn more about the Infrastructure Program, please check out our funding announcements for the [CDRN](#) and the [PPRN](#). You can also learn more about the origins of PCORI's Infrastructure work by reading about our [Electronic Data Workshop](#) hosted in Palo Alto in July 2012.

Should you have questions please contact us at: [pcorijobs@pcori.org](mailto:pcorijobs@pcori.org).