

Allina Hospitals & Clinics, located in Minnesota and Western Wisconsin is a not-for-profit system of hospitals, clinics and other health care services, united in caring for our patients – with unparalleled talent, knowledge and technology; caring for our communities – through collaborative efforts to promote stewardship, compassion and wellness; and caring for each other – in an environment that puts patients first and helps passionate people excel. This is what makes Allina unique. Won't you join us?

Allina is proud to be the first Minnesota health care organization to earn the Davies Award, the industry's preeminent award from the Healthcare Information and Management Systems Society, for our work on our new electronic medical record system.

Facility & Location (In relation to Mpls./St. Paul)	Position	Call	Inpatient/ Outpatient	Admitting Hospital
AMC-Coon Rapids 14 miles north	Pediatrician	1:15	5% Inpatient 95% Outpatient	Mercy Hospital; 252-Bed
AMC-Farmington 20 miles south	Pediatrician	Phone Call Only	Primarily Outpatient	United Hospital; 556-Bed
AMC-Hastings 20 miles southeast	Pediatrician	1:12	95% Outpatient 5% Inpatient	Regina Medical Center; 57-Bed
AMC-Northfield 35 mi. south	Pediatrician	1:8	Primarily Outpatient	Northfield Hospital; 37-Bed
Cambridge Medical Center 45 miles north	Pediatrician	1:12	15% Inpatient 85% Outpatient	Cambridge Medical Center; 86-Bed
Mercy Hospital Service Coon Rapids; 15 miles north	Pediatrics Hospitalist	No call, 12 hour shifts	100% Inpatient	Covers a 14-Bed inpatient unit
Physicians Group of New Ulm 90 miles southwest	Pediatrician	1:2	Primarily Outpatient	New Ulm Medical Center; 25-bed

Allina benefits package includes: medical, dental, and vision insurance, life insurance, short & long-term disability, an employer-paid retirement plan, paid time off, an annual flex allowance based on your estimated cash compensation, payment of your malpractice insurance, annual CME allowance, and payment of your licensure fees.

Allina Physician Recruitment

2925 Chicago Avenue, Mail Route 10703

Minneapolis, MN 55407-1321

Toll-Free: 800-248-4921

Fax: 612-262-4163

Website: www.allina.com

Email: recruit@allina.com



AT A GLANCE

Allina Hospitals & Clinics believes people's most valuable asset is their good health. Our family of hospitals, clinics and other care services are dedicated to meeting the lifelong health care needs of communities throughout Minnesota and western Wisconsin. Allina offers a full range of primary and specialty care services including technically advanced inpatient and outpatient care, 24-hour emergency care, medical transportation, pharmacy, home care and hospice services.

Our more than 23,500 employees, 5,000 physicians and 2,500 volunteers share a common mission – to deliver exceptional health care and support services to the people in our communities – putting the patient first in everything we do. Allina provides a complete continuum of care - from disease prevention to innovative diagnostic and treatment services for complex medical conditions.

One patient. One record. For the past several years, Allina has been implementing one of the most comprehensive electronic medical record (EMR) systems in the nation; it will be available at all of Allina's hospitals and clinics by 2009. Allina is transforming health care with the EMR by providing patients with seamless, coordinated and more informed care and improved patient safety. MyChart, an Internet tool, enables patients to securely access portions of their medical records, get lab results, schedule appointments online and more. Allina is the first Minnesota health care organization to earn the Davies Award, the industry's preeminent award for health information technology.

Allina is a not-for-profit organization that cares about improving the health of the communities we serve not only in medical settings, but wherever people live, learn and work. *Heart Safe Communities*, which places automated external defibrillators in public places to prevent death from sudden cardiac arrest, and our childhood obesity prevention initiative are just two examples of Allina's work to benefit its communities.



Our Mission

We serve our communities by providing exceptional care, as we prevent illness, restore health and provide comfort to all who entrust us with their care.



ALLINA HOSPITALS & CLINICS SYSTEM OFFICE
2925 Chicago Avenue
Minneapolis, Minnesota 55407
612-262-5000
Mailing Address: P.O. Box 43, Minneapolis, MN 55440-0043
Web address: www.allina.com


ALLINA
Hospitals & Clinics

Allina Medical Clinic

Allina Medical Clinic (AMC) is a multi-specialty medical group providing primary and specialty care to people in more than 40 Minnesota communities. More than 600 health care practitioners focus on the complete health care needs of their patients, helping them to identify health risks and manage chronic illness. The American Diabetes Association has recognized AMC for its diabetes patient education program. Some clinic locations offer eye care, and chiropractic and massage therapy.

Aspen Medical Group

Aspen Medical Group has more than 30 years of experience in health care, serving patients across the Twin Cities in 10 different locations. More than 150 experienced, board certified providers provide primary care and more than 20 areas of specialty care for patients ranging from infants to seniors. Aspen Medical Group is committed to utilizing best practice guidelines and continued research to achieve the best clinical outcomes for its patients.

Abbott Northwestern Hospital

Located in Minneapolis, Abbott Northwestern is a nationally recognized hospital providing comprehensive health care for more patients and their families than any other not-for-profit hospital in Minnesota. Among the distinguished services provided by Abbott Northwestern are cardiovascular care in conjunction with the Minneapolis Heart Institute; Virginia Piper Cancer Institute and Piper Breast Center; Minneapolis Neuroscience Institute; Orthopaedic Institute; Spine Institute; and Birth Center.

Buffalo Hospital

Located in the western metropolitan community of Buffalo, Buffalo Hospital is an ever-evolving regional medical center that offers state-of-the-art facilities, personalized care in private rooms and services that are continuously being added and enhanced. It provides specialty services including The Birth Center, Cardiac Center, Emergency and Urgent Care Services, Sleep Center, and Sister Kenny Rehabilitation Institute with patient-centered care that drives all decisions to support the best interests of its patients.

Cambridge Medical Center

Located in the community of Cambridge, Cambridge Medical Center (CMC) is a regional health care facility providing comprehensive health care services to residents of Isanti County. The medical center is comprised of a large multi-specialty clinic and a hospital on one large campus. Dedicated to meeting the needs of its patients, CMC provides an atmosphere that promotes healing and comfort.

Mercy Hospital

Located in Coon Rapids, Mercy Hospital provides comprehensive and compassionate health care services to the north metro communities. Among the services providing cutting-edge care are Heart & Vascular Center, Women's Heart Center, Cancer Center, Women's & Children's Services, Emergency Services, Mental Health Services, and a wide range of health education and support groups. Mercy also serves the

Patient Care Facilities

11	Hospitals
45	Allina Medical Clinic sites
10	Aspen Medical Group sites (joined Allina Jan. 1, 2008)
23	Hospital-based clinics
15	Community pharmacy sites
4	Ambulatory care centers

2007 Key Figures

23,653	Employees
1,818	Staffed beds
120,190	Inpatient hospital admissions
1,142,479	Hospital outpatient admissions
33,506	Inpatient surgical procedures
60,283	Outpatient surgical procedures
266,510	Emergency care visits
16,386	Births
2,858,839	Total clinic visits [AMC & hospital-based]
129,152	Hospice visits
893,248	Pharmacy prescriptions filled
8,213,477	Lab tests performed
171,867	Oxygen/medical equipment orders
44,565	Ambulance transports

2007 Annual Net Operating Revenue

\$2.5 billion

community through Elk Ridge Health, a surgery center and clinic in Elk River.

New Ulm Medical Center

Located in south central Minnesota, New Ulm Medical Center (NUMC) consists of a hospital and clinic that serves the region in and around Brown County. NUMC offers an extensive range of health care options, including family practice, internal medicine, general surgery, pediatrics, orthopedics, obstetrics and gynecology, radiology, emergency medicine, psychiatry, oral and maxillofacial surgery, and podiatry, mental health and substance abuse, home care and hospice. As a fully involved member of its community, NUMC continually fosters an atmosphere of well being outside its four walls through a variety of community-focused initiatives.

Owatonna Hospital

Located south of the Twin Cities metropolitan area, Owatonna Hospital provides comprehensive care to patients in and around Steele County. The hospital offers a full range of inpatient, outpatient and emergency care services, as well as home and palliative care and hospice. Owatonna Hospital has helped to make a positive difference in the lives of its patients and the community for more than 100 years. Groundbreaking took place in 2007 for a new hospital to replace the existing facility; it is scheduled for completion in 2009.

Our Values: stewardship, trust, compassion, integrity, respect

Phillips Eye Institute

Located in Minneapolis, Phillips Eye Institute (PEI) is the third largest specialty hospital in the U.S., specializing in the diagnosis, treatment and care of eye disorders and diseases. PEI draws patients from a five-state region with an extensive array of services, ranging from diagnostic tests and vision rehabilitation to laser eye treatments and specialized eye surgery.

River Falls Area Hospital

Located in western Wisconsin, River Falls Area Hospital is part of a shared medical campus that provides easy access to hospital services as well as primary care and specialty clinics, a long-term care facility and a wellness and fitness center. River Falls Area Hospital offers cardiovascular care, emergency and surgical services, birth center, home care and hospice services.

St. Francis Regional Medical Center

Located in Shakopee, St. Francis Regional Medical Center serves the people of the Twin Cities south metro area with the unique blend of a therapeutic environment combined with the latest technology and treatment. St. Francis provides a wide array of patient care services, including The Family Birth Place, Breast Center, Cancer Center, pediatric care, rehabilitation and sports medicine, as well as a range of health education and support groups. St. Francis is jointly owned by Allina Hospitals & Clinics, Benedictine Health System and Park Nicollet Health Services.

United Hospital

Located in downtown St. Paul, United Hospital is the largest hospital in the Twin Cities east metro area. United has a reputation for excellence in patient care and state-of-the-art facilities, with innovative programs such as cardiovascular services (including Nasseff Heart Center, Women's Heart Center and Vascular Center); Nasseff Neuroscience Center; and psychiatry, women's health, surgical, rehabilitation and emergency services.

Unity Hospital

Located in Fridley, Unity Hospital provides a full range of health care services to the north metro area, including a renowned Bariatric [surgical weight loss] Center. Other services include the Heart & Vascular Center, Women's & Children's Services, Emergency Services and Mental Health Services including geriatric mental health. Unity also offers a complete array of health education and support groups to patients and the community.

The Allina Contact Center – also known as **Medformation** – provides physician referrals, information on Allina services, and class information and registration. Call **612-262-3333** or find the information online at **www.allina.com**.

Allina Community Pharmacies

Allina Community Pharmacies, with 15 locations, provide fast, efficient service to patients. New, refill or transfer prescriptions may be ordered online through www.allina.com/pharmacy for home delivery via U.S. mail. Pharmacists can answer prescription questions in person or over the phone. Pharmacy team members have special expertise in many acute and chronic medication needs, including organ transplant, diabetes, infertility, pediatrics, oncology and management of multiple medications.

Allina Home Care, Hospice & Palliative Care

Allina Home Care, Hospice & Palliative Care is the trusted provider and expert resource in delivering patient-centered care and services for patients and families needing rehabilitation, advanced-illness or end-of-life care. Home Care provides a wide range of health care services for patients in the comfort of their home. Hospice honors the wishes of patients at the end of their lives, and brings peace, dignity and comfort to them and their loved ones. Palliative Care is for those with an advanced or serious illness, and helps patients and families understand the illness and treatment choices.

Allina Home Oxygen & Medical Equipment

For more than two decades, Allina Home Oxygen & Medical Equipment (HOME) has provided oxygen, medical equipment and supplies to clients ranging from pediatrics to geriatrics with varying needs. HOME is a full-service provider, carrying a wide array of medical supplies and equipment for patients with conditions such as chronic, obstructive pulmonary disease, chronic heart failure and sleep apnea.

Allina Medical Laboratories

Allina Medical Laboratories is an integrated, multi-site laboratory, providing essential and specialized services to Allina inpatients, outpatients and clinic patients, as well as support and consultation to medical providers. It partners with Hospital Pathology Associates, PA, which has a staff of more than 35 certified pathologists in a variety of specialties.

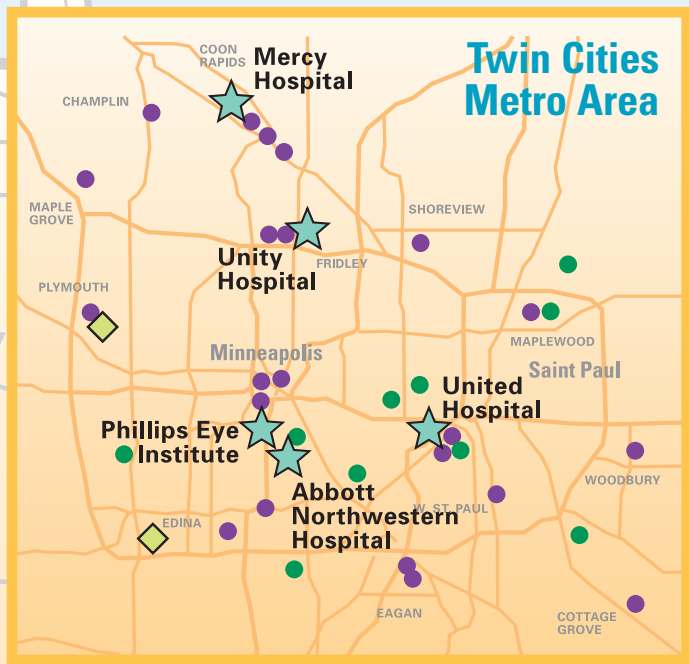
Allina Medical Transportation

A leader and innovator in pre-hospital emergency medical services, Allina Medical Transportation (AMT) is devoted to providing skilled and compassionate advanced life support, basic life support and scheduled transport in more than 75 Minnesota communities. More than 370 paramedics, emergency medical technicians and dispatchers work together to provide service to an area of approximately 1,000 square miles, reaching over 750,000 people.

Sister Kenny Rehabilitation Institute

Sister Kenny Rehabilitation Institute provides rehabilitative services at Abbott Northwestern, United, Mercy, Unity and Buffalo hospitals. Outpatient care is offered at community-based Sister Kenny Sports & Physical Therapy Centers. Sister Kenny treats more than 70,000 patients each year for a variety of conditions such as stroke and back pain, as well as sports-related, spinal cord and brain injuries, helping patients achieve their personal best.

Allina Hospitals & Clinics



Allina Hospitals

Abbott Northwestern Hospital, Minneapolis
 Buffalo Hospital
 Cambridge Medical Center
 Mercy Hospital, Coon Rapids
 New Ulm Medical Center
 Owatonna Hospital
 Phillips Eye Institute, Minneapolis
 River Falls Area Hospital, Wisconsin
 St. Francis Regional Medical Center, Shakopee (jointly owned with Benedictine Health System and Park Nicollet Health Services)
 United Hospital, St. Paul
 Unity Hospital, Fridley

Allina Ambulatory Care Centers

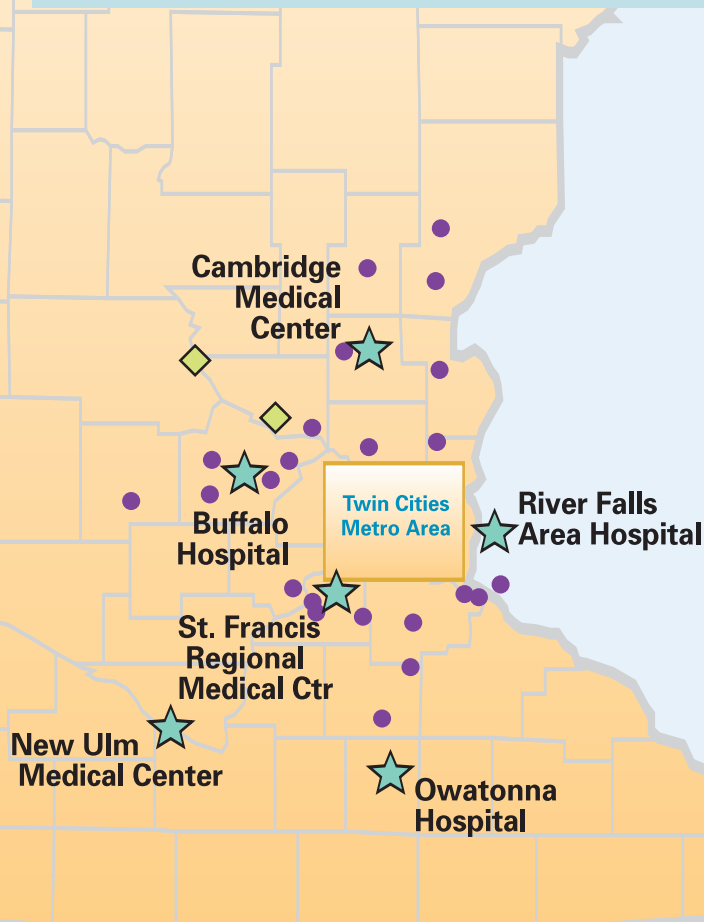
Abbott Northwestern's Sartell Outpatient Center
 Abbott Northwestern's Center for Outpatient Care, Edina
 Elk Ridge Health, Elk River
 WestHealth Campus, Plymouth (jointly owned with North Memorial Health Care)

Allina Medical Clinic Sites

Annandale
 Buffalo
 Cambridge
 Champlin
 Chaska: Crossroads
 Cokato
 Coon Rapids
 Coon Rapids: Midwest Surgery
 Coon Rapids Women's Health
 Cottage Grove
 Eagan
 Eagan: Parkview OB/GYN
 Edina
 Elk River
 Faribault
 Farmington
 Forest Lake
 Fridley OB/GYN
 Fridley: Surgical Specialties
 Hastings: First Street
 Hastings: Nininger Road
 Hinckley
 Litchfield
 Maple Grove
 Maplewood: Parkview OB/GYN
 Minneapolis: Isles
 Minneapolis: Nicollet Mall
 Minneapolis: The Doctors Uptown
 Mora

Aspen Medical Group Sites

Bloomington
 Hopkins
 Inver Grove Heights
 Maplewood
 Minneapolis: East Lake Street
 St. Paul: Bandana Square
 St. Paul: Fort Road Medical Bldg.
 St. Paul: Digestive Health Center
 St. Paul: Highland Park
 White Bear Lake



- Allina Hospital
- Allina Ambulatory Care Center
- Allina Medical Clinic
- Aspen Medical Group

